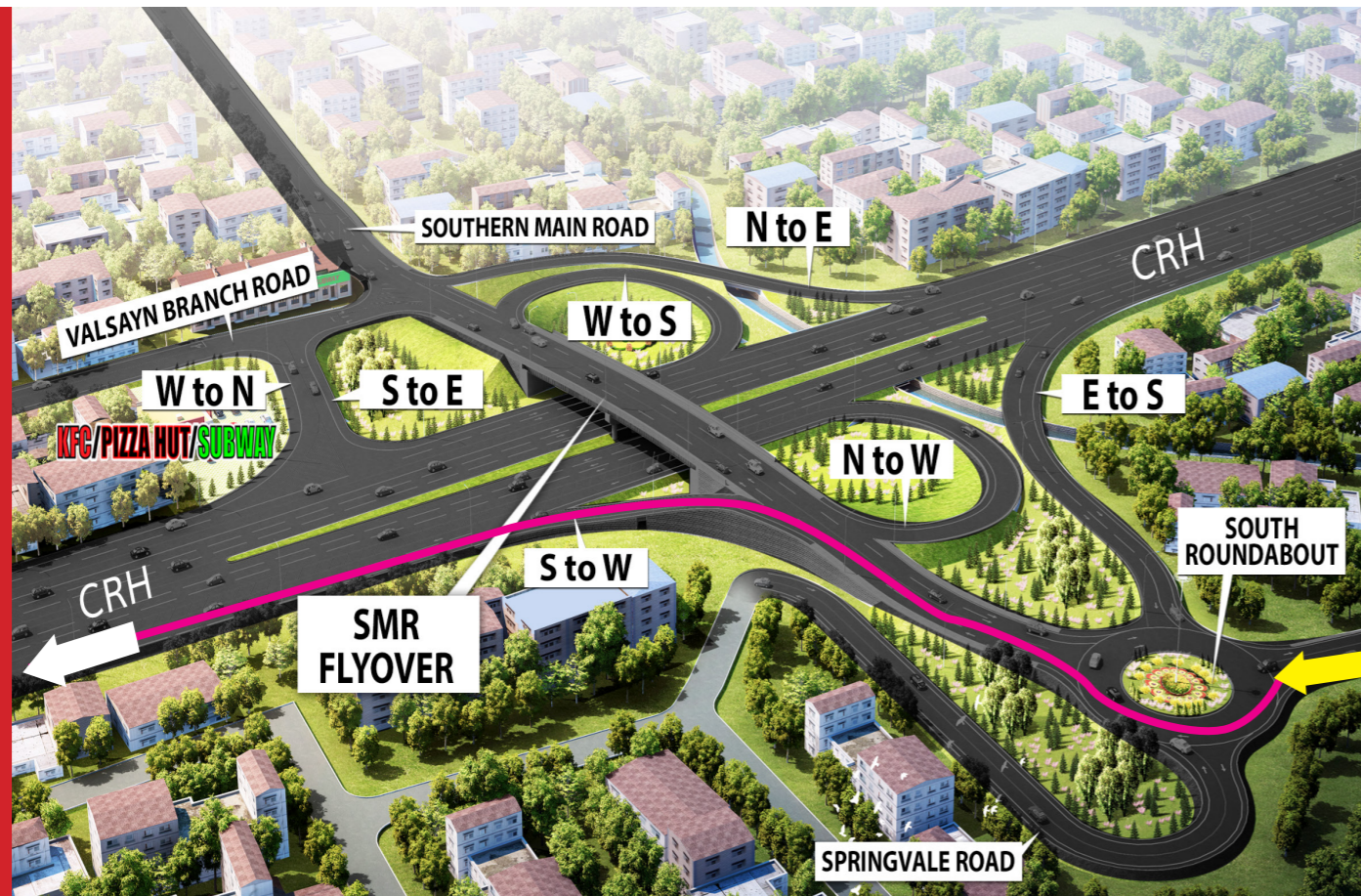


SOUTH TO WEST

- FROM Springville, Caroni and environs TO POS, San Fernando, Valsayn South, Valpark, Bamboo, Grand Bazaar and environs.

Proceed north along the Southern Main Road, take the second exit at the South Roundabout, keep left and follow the directional signs to access final destination.



NO CHANGE IN TRAFFIC FLOW (TEMPORARY)

Motorists are advised that the following movements remain unchanged temporarily until the Main Opening of the Curepe Interchange Project which is tentatively scheduled in May 2020

EAST TO VALSAYN SOUTH/VALPARK

NO CHANGE IN TRAFFIC FLOW (PERMANENT)

Motorists are advised that the following movements remain unchanged

EAST TO WEST

EAST TO SOUTH

WEST TO NORTH

WEST TO EAST

NORTH TO EAST

VALSAYN BRANCH ROAD TO EAST

VALSAYN BRANCH ROAD TO NORTH

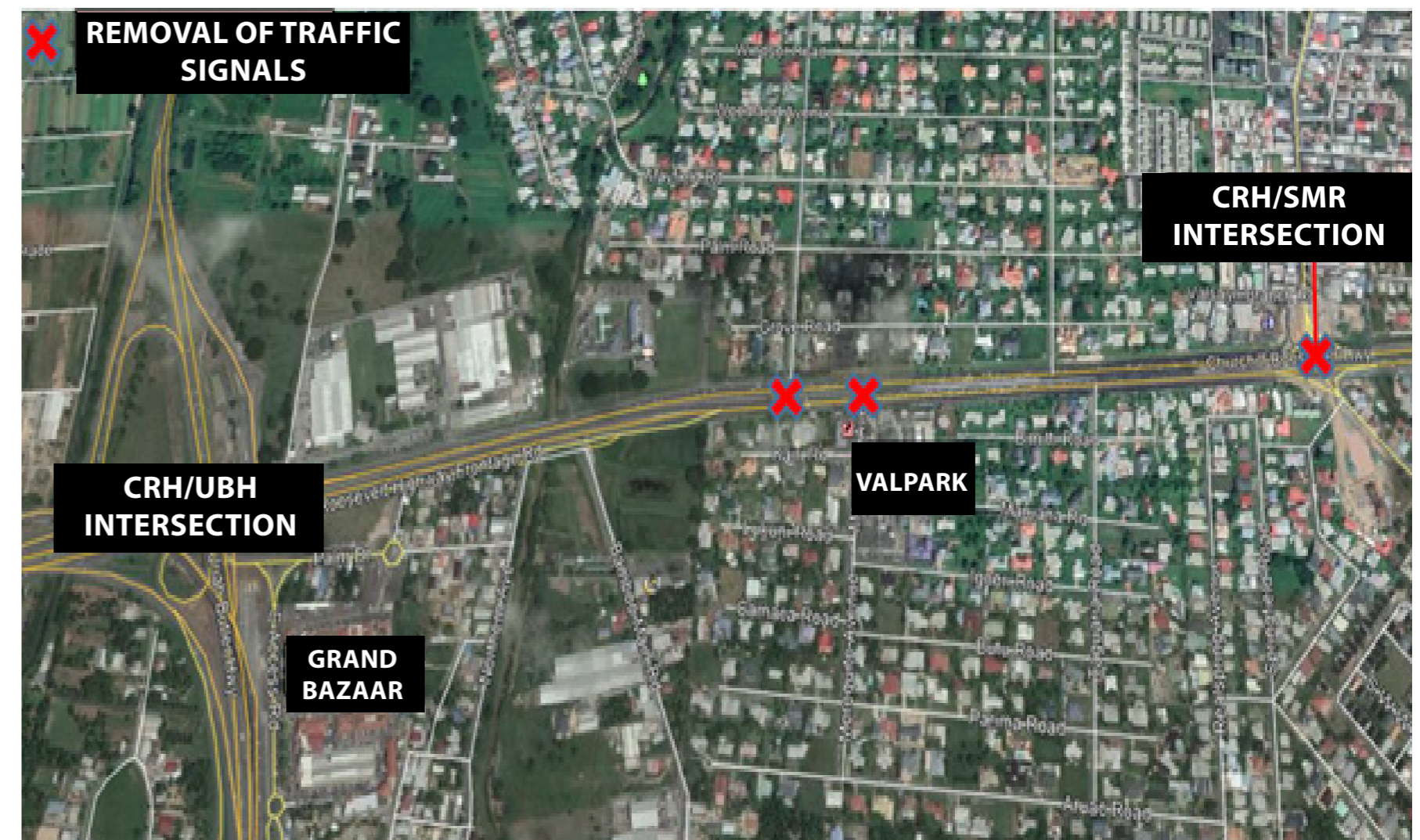
PUBLIC NOTICE

CUREPE INTERCHANGE PROJECT

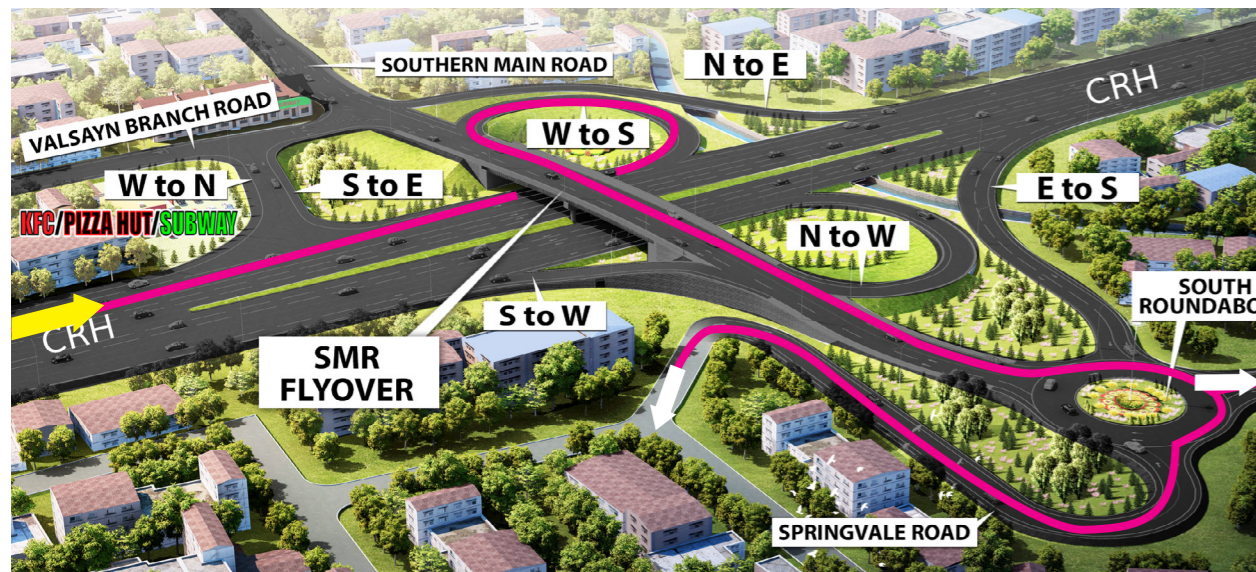
CHANGES IN TRAFFIC FLOW

The National Infrastructure Development Company Limited Ltd (NIDCO) in partnership with the Ministry of Works and Transport (MOWT) wishes to advise the general public (motorists/residents/pedestrians) that the Curepe Interchange Project will be partially opened on **April 29th, 2020**.

Motorists/Residents/Pedestrians are further advised that all traffic signals in the vicinity of the relocated Churchill Roosevelt Highway (CRH) and Southern Main Road (SMR) Intersection will be decommissioned.



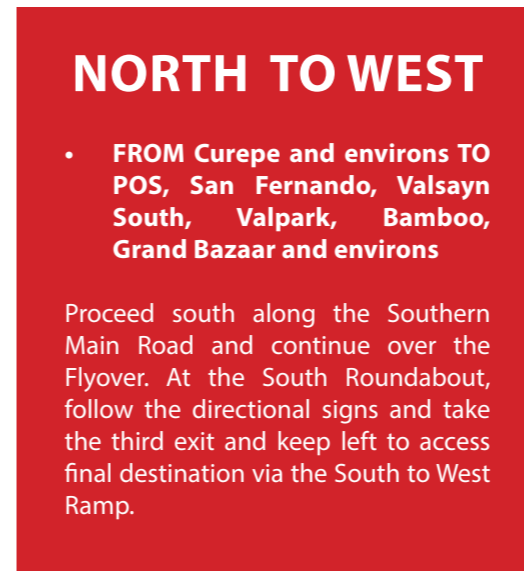
THIS WILL RESULT IN THE FOLLOWING CHANGES IN TRAFFIC FLOWS EFFECTIVE WEDNESDAY 29TH APRIL, 2020 AT 10AM



WEST TO SOUTH

- FROM POS, San Fernando and environs TO Springvale, Springville, Caroni and environs

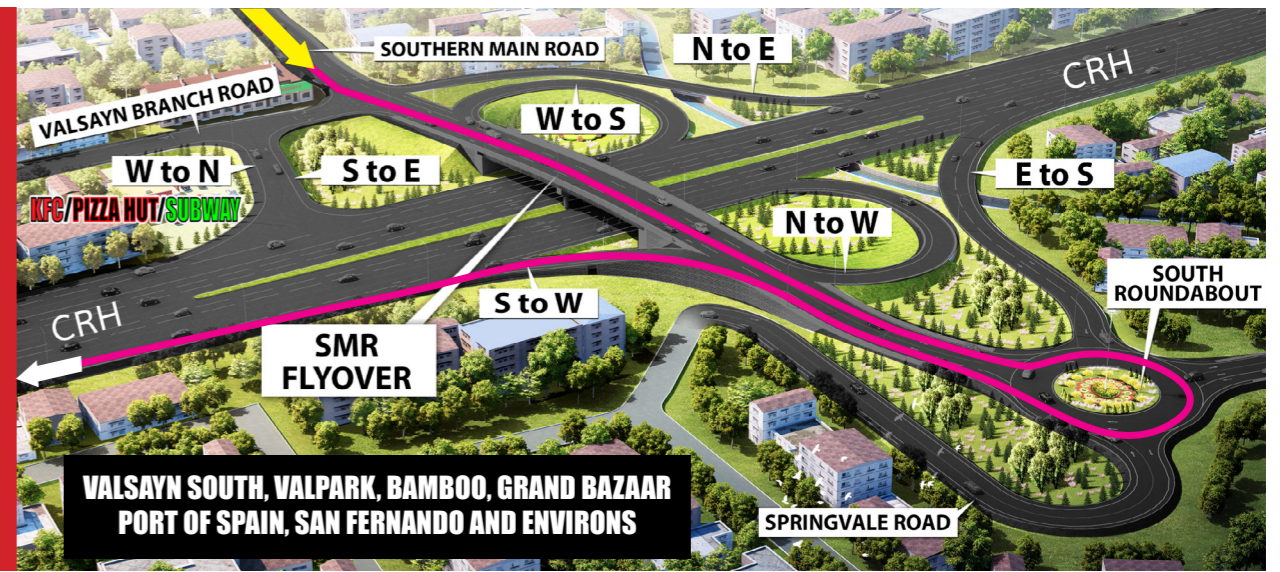
Keep left along the CRH Eastbound, follow the directional signs and exit onto the frontage road. Continue along the frontage road and then merge left onto the West to South Ramp and continue onto the Flyover. Proceed south along the Flyover and take the first exit at the South Roundabout to access final destination.



NORTH TO WEST

- FROM Curepe and environs TO POS, San Fernando, Valsayn South, Valpark, Bamboo, Grand Bazaar and environs

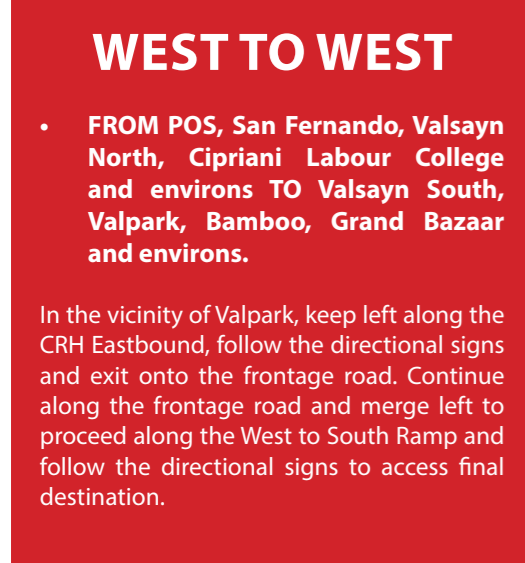
Proceed south along the Southern Main Road and continue over the Flyover. At the South Roundabout, follow the directional signs and take the third exit and keep left to access final destination via the South to West Ramp.



EAST TO NORTH

- FROM Piarco, Arima and environs TO Curepe, Valsayn Branch Road and environs

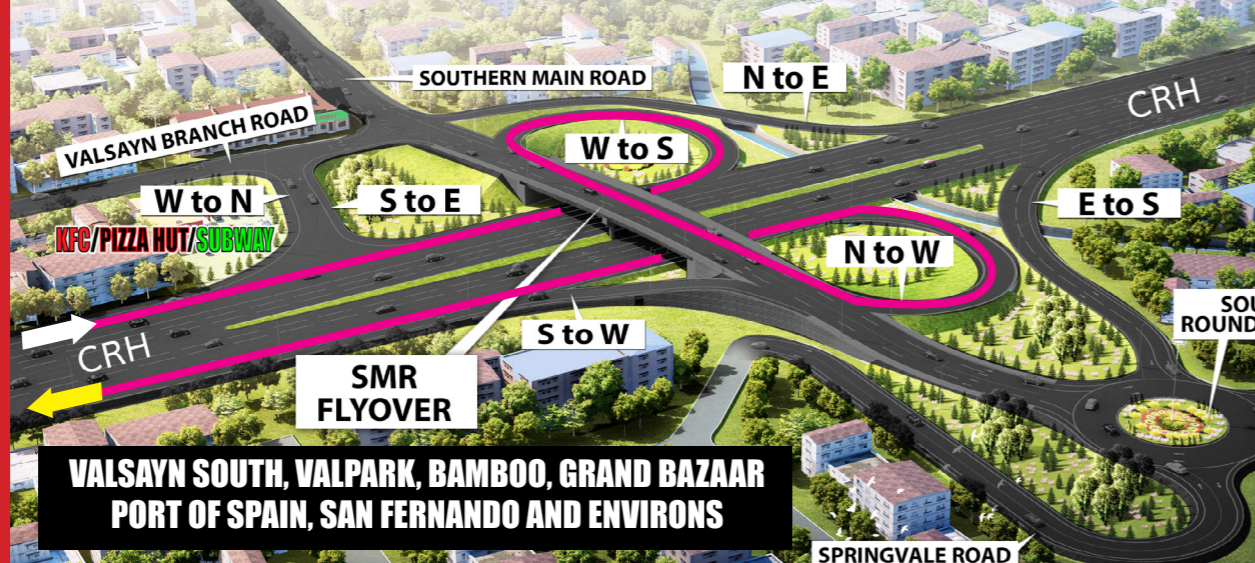
In the vicinity of the yellow pedestrian walkover keep left, follow the directional signs, exit the CRH and proceed to the South Roundabout. At the Roundabout take the third exit, keep right and follow the directional signs to access final destination.



WEST TO WEST

- FROM POS, San Fernando, Valsayn North, Cipriani Labour College and environs TO Valsayn South, Valpark, Bamboo, Grand Bazaar and environs.

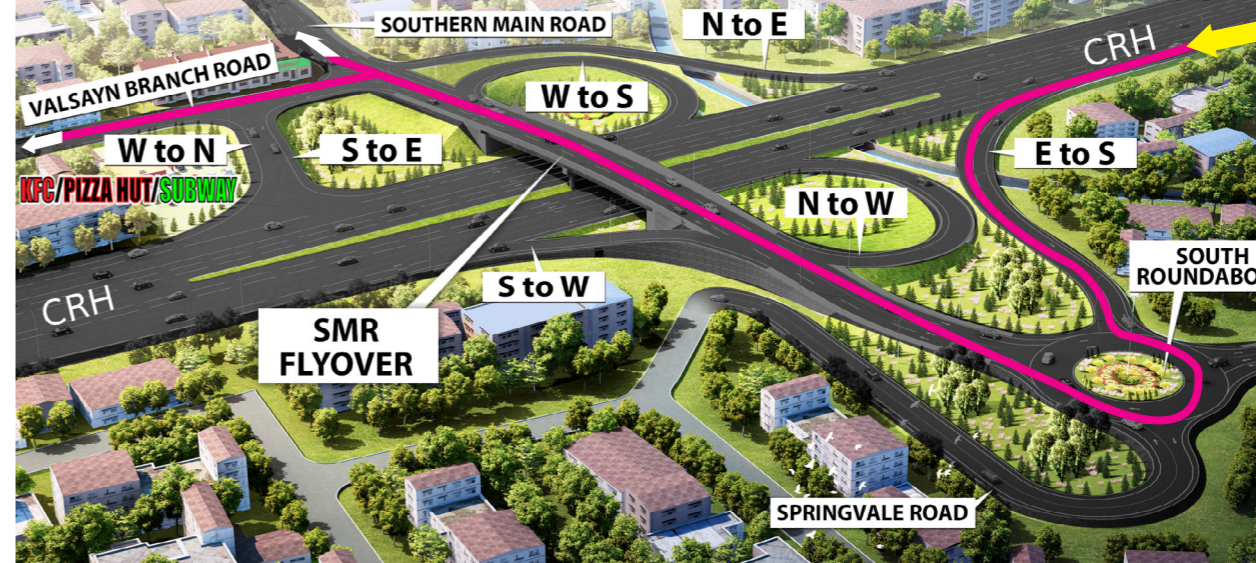
In the vicinity of Valpark, keep left along the CRH Eastbound, follow the directional signs and exit onto the frontage road. Continue along the frontage road and merge left to proceed along the West to South Ramp and follow the directional signs to access final destination.



NORTH TO VALSAYN BRANCH ROAD

- FROM Curepe and environs TO Valsayn Branch Road.

Proceed south along the Southern Main Road and continue over the Flyover. At the South Roundabout, take the third exit, keep right, continue onto the Flyover and follow the directional signs to access Valsayn Branch Road.



SOUTH TO NORTH

- FROM Springville, Caroni and environs TO Curepe, Valsayn Branch Road and environs

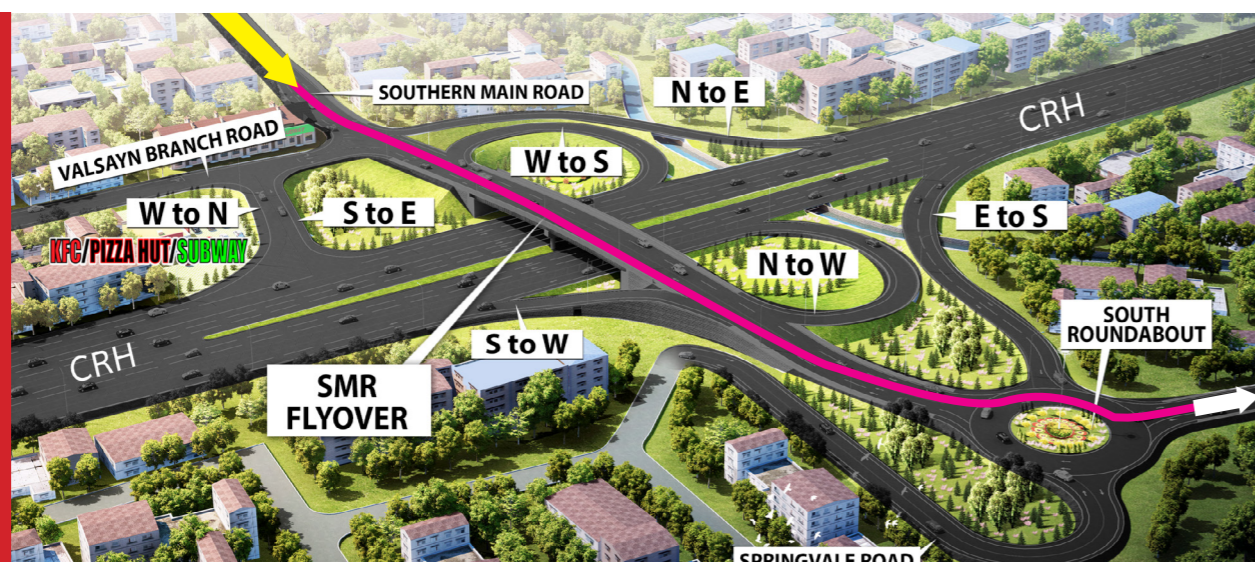
Proceed north along the Southern Main Road, take the second exit at the South Roundabout, keep right and follow the directional signs to final destination.



NORTH TO SOUTH

- FROM Curepe and environs TO Springville, Caroni and environs

Proceed south along the Southern Main Road and continue over the Flyover. At the South Roundabout, take the first exit to access final destination.



SOUTH TO EAST

- FROM Springville, Caroni and environs TO Piarco, Arima and environs

Proceed north along the Southern Main Road, take the second exit at the South Roundabout, keep right and continue north along the Flyover. On the Flyover keep left and follow the directional signs to access final destination.