

PUBLIC NOTICE

CUREPE INTERCHANGE PROJECT

TEMPORARY TRAFFIC DISRUPTION

Temporary Closure of Access to Southern Main Road - South (Caroni and environs) at its intersection with the Churchill Roosevelt Highway

The National Infrastructure Development Company Limited (NIDCO) in partnership with the Ministry of Works and Transport (MOWT) wishes to advise the general public (motorists/residents) that:

- there will be a temporary closure of access to the Southern Main Road from the Churchill Roosevelt Highway, south of the intersection, in the vicinity of the Old Kay Donna Compound.
- access from Southern Main Road - South (Caroni, Spring Village and environs) to the Churchill Roosevelt Highway Westbound ONLY will be maintained.

This closure is required to facilitate the completion of construction works associated with the Curepe Interchange Project and will take effect from **Wednesday 25th March, 2020 at 7:00 AM** and continue to **Thursday 2nd April, 2020 to 6:00 PM**.

ALTERNATIVE ROUTES

Motorists are advised to utilize the following alternative routes:

EGRESS FROM SMR SOUTH

- via the Churchill Roosevelt Highway and CRH/UBH Interchange; or
- via Trantrill Road, Freeman Road and the Churchill Roosevelt Highway; or
- via the Caroni Savannah Road, Uriah Butler Highway and Churchill Roosevelt Highway.

ACCESS TO SMR SOUTH

- via the Churchill Roosevelt Highway, Uriah Butler Highway and Caroni Savannah Road; or
- via the Churchill Roosevelt Highway, Pasea Main Road, Freeman Road and Trantrill Road.

FROM SOUTHERN MAIN ROAD - SOUTH

TO SMR NORTH AND EAST:

Motorists/residents travelling north along Southern Main Road from Caroni, Spring Village and environs who wish to proceed to Curepe, St. Augustine and environs are advised to observe all temporary directional signage provided on the approaches to the site to access the Churchill Roosevelt Highway (CRH) Westbound. Motorists/residents are further advised to keep left along the CRH and follow the directional signs to access the eastbound section of the CRH and final destination via the CRH/Uriah Butler Highway Interchange.

TO WEST:

Motorists/residents travelling north along Southern Main Road from Caroni, Spring Village and environs who wish to proceed to the Churchill Roosevelt Highway (CRH) Westbound are advised to observe all temporary directional signage provided on the approaches to the site to access their final destination.

TO SOUTHERN MAIN ROAD SOUTH

FROM SMR NORTH:

Motorists/residents travelling south along Southern Main Road (SMR) from Curepe and environs who wish to proceed to Caroni, Spring Village and environs are advised to continue south along the SMR and proceed onto the westbound section of the Churchill Roosevelt Highway (CRH) at the signalized intersection.

Motorists must then keep left, exit the CRH and proceed to the southbound section of the Uriah Butler Highway (UBH). Motorists are further advised to keep left along the UBH, follow the directional signs and exit at the Caroni Overpass to access their final destination along SMR via the Caroni Savannah Road.

FROM EAST:

Motorists/residents travelling west along the Churchill Roosevelt Highway (CRH) from Macoya, Pasea and environs who wish to proceed to Caroni, Spring Village and environs are advised to turn left onto Pasea Main Road and follow the directional signs to access their final destination along SMR via Freeman and Trantrill Road.

FROM WEST:

Motorists/residents travelling east along the Churchill Roosevelt Highway (CRH) from Port of Spain and environs who wish to proceed to Caroni, Spring Village and environs are advised to keep left along the CRH and follow the directional signs to access the southbound section of the UBH via the CRH/Uriah Butler Highway Interchange.

Motorists are further advised to keep left, follow the directional signs and exit at the Caroni Overpass to access their final destination along SMR via the Caroni Savannah Road.

FROM NORTH:

Motorists/residents travelling south along the Uriah Butler Highway (UBH) from Mt. Hope and environs who wish to proceed to Caroni, Spring Village and environs are advised to continue south across the CRH/UBH Interchange and keep left along the UBH. Motorists are further advised to follow the directional signs and exit left onto the Caroni Overpass to access their final destination along SMR via the Caroni Savannah Road.

Motorists are further advised to comply with following:

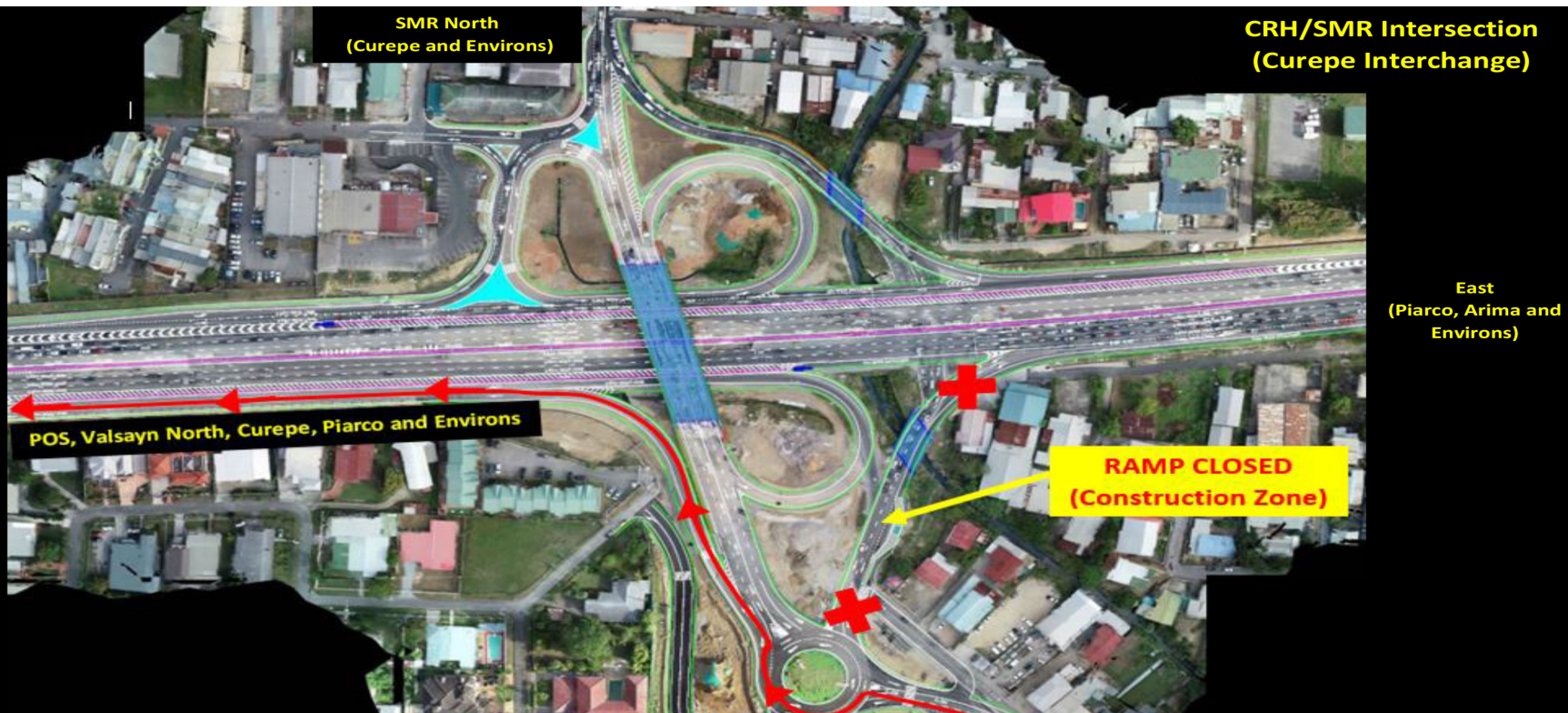
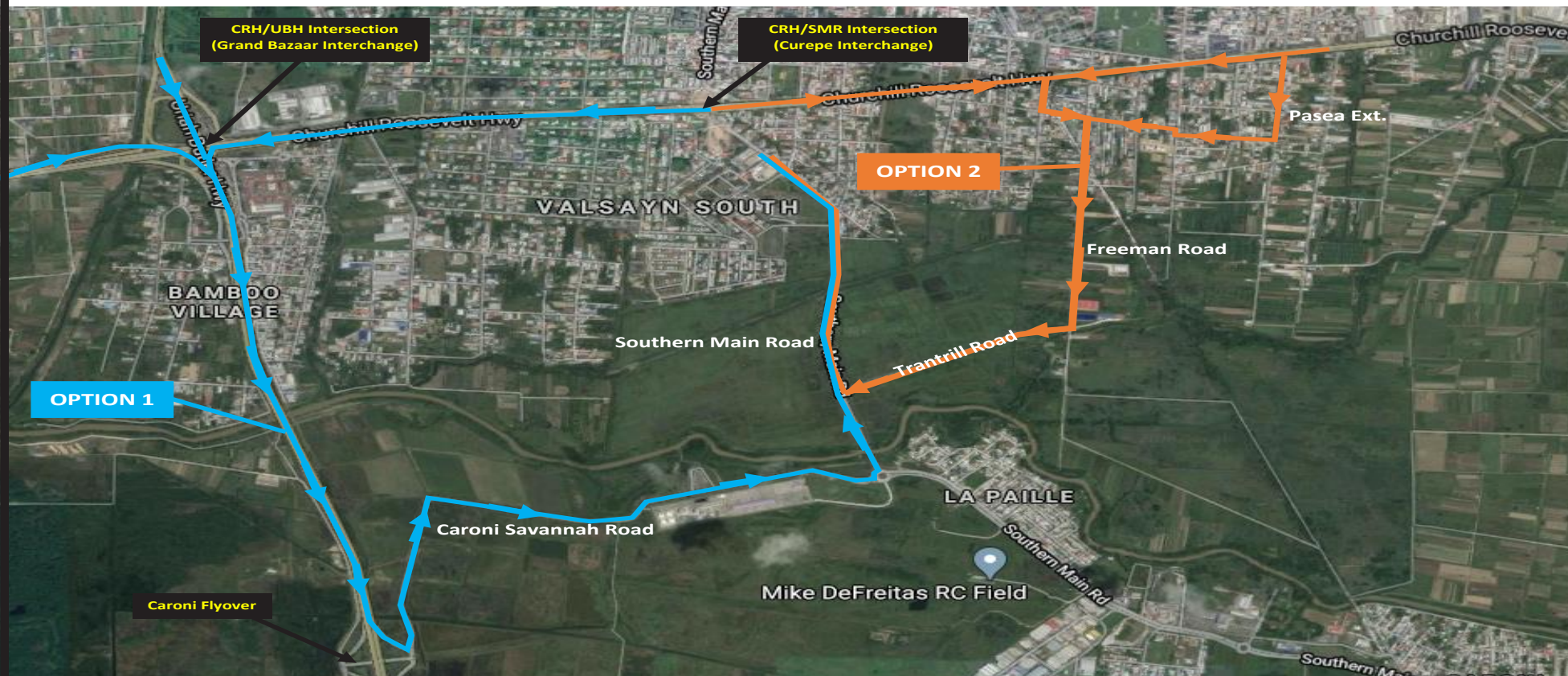
proceed with caution and drive at a reduced speed on approaching the work zone;

- be aware of heavy equipment entering and exiting the site;
- observe all temporary directional signage provided on the approaches to the site; and
- comply with instructions issued by police officers on site to facilitate a safe and orderly flow of traffic.

The Ministry of Works and Transport regrets any inconvenience caused and thanks the public for its cooperation. For further information and for full illustrations, please visit the www.mowt.gov.tt or www.nidco.co.tt or visit their social media pages.

We thank you for your cooperation and regret any inconvenience caused.

ALTERNATIVE ROUTES



We thank you for your cooperation and regret any inconvenience caused.