



MINISTRY OF WORKS AND TRANSPORT

Corporate Communication Unit

Corner Richmond and London Streets, Port of Spain

Tel: (868) 625-1225 Ext 10813 Fax: (868)625-3091 Email: communications@mowt.gov.tt

PUBLIC NOTICE

Thursday 25th June, 2020

TEMPORARY TRAFFIC DISRUPTION CLOSURE OF WRIGHTSON ROAD

The Ministry of Works and Transport wishes to advise the public that there will be a temporary traffic disruption along Wrightson Road, **between Edward Street and Sackville Street**, from **Friday 26th June, 2020 at 9PM to Monday 29th June, 2020 at 4AM**. This has become necessary in order to facilitate the installation of the Pedestrian Overpass Superstructure.

Please Note:

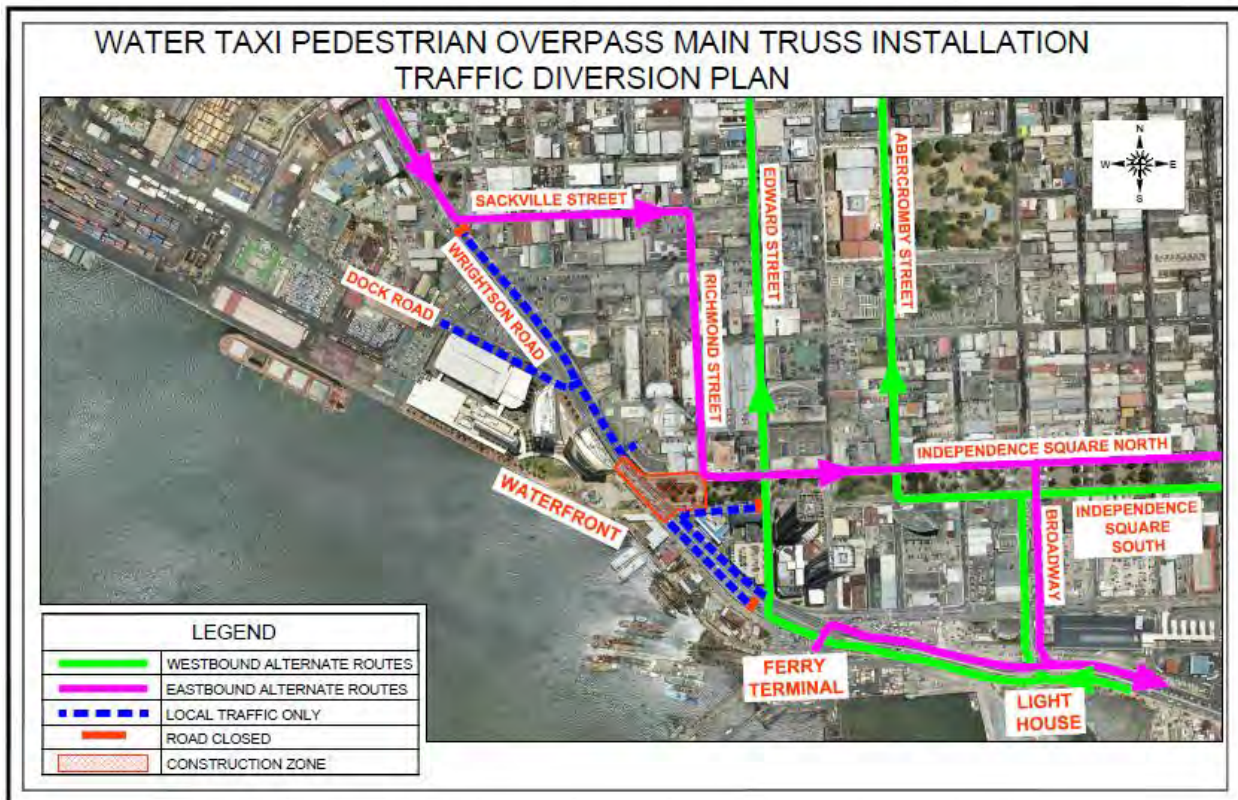
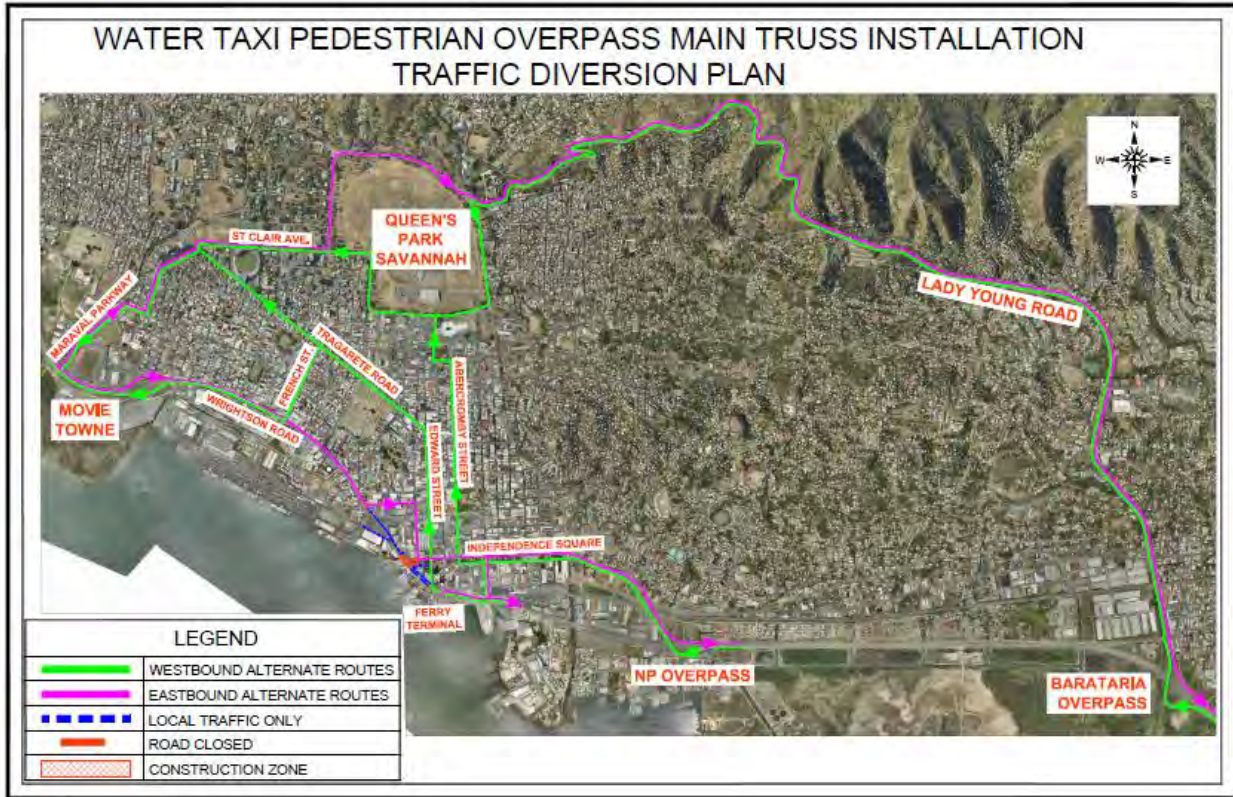
1. This section of Wrightson Road will be **CLOSED** to vehicular traffic during this period in order to facilitate the timely completion of these works.
2. Exemptions will be made to Emergency Vehicles, Trailer Trucks and Wide Turning Trucks **ONLY** through the Construction Zone except on **Saturday 27th June 2020 between the hours of 5am and 9am**.

Alternative Routes

During this period, motorists are advised to utilize one of the alternative routes provided: -

1. **Motorists wishing to proceed Westbound (Option 1)** – It is recommended that motorists utilize the Barataria Overpass, over the Lady Young Road to your desired destination into and out from Port of Spain and environs.
2. **Motorists wishing to proceed Westbound (Option 2)** - Motorists can also utilize the NP Overpass along the Beetham Highway through Independence Square to your desired destination into Port of Spain and environs.
3. **Motorists wishing to proceed Eastbound (Option 3)** – Motorists can utilize the Maraval Parkway or Sackville Street through Independence Square and unto the NP Overpass to your desired destination.

4. **(Option 4)** - Motorists proceeding either Eastbound or Westbound directions can utilize any other alternative routes desired, to avoid the diversion in the vicinity of the work zone.



In light of the above, motorists are advised to comply with the following:-

- Proceed with caution and observe all directional signs and barriers
- Motorists should drive at a reduced speed on approaching the work zone
- Comply with instructions from Police Officers on site to facilitate a safe and orderly flow of traffic
- Be aware of heavy equipment entering and exiting the site

The Ministry of Works and Transport regrets any inconvenience caused and thanks the public for its continued cooperation. For further information, please visit the Ministry of Works and Transport website at www.mowt.gov.tt or call the **PURE Unit at 638-2350/675-4052**.
