



## MINISTRY OF WORKS AND TRANSPORT

2-4 London Street, Port of Spain 100623, Trinidad and Tobago  
Tel: (868) 625-1225 Ext 10813 Fax: (868)625-3091 Email: communications@mowt.gov.tt

# CLOSURE OF RIENZI KIRTON HIGHWAY AND LADY HAILES AVENUE SAN FERNANDO

July 12, 2022  
**PUBLIC NOTICE**

The Ministry of Works and Transport wishes to advise the public that there will be a temporary road closure along:

- **The Rienzi Kirton Highway between Todd's Street and Ruth Avenue and**
- **Lady Hailes Avenue between Gulf View Link Road and Steve Achaiba Road.**

This has become necessary to facilitate the installation of superstructures for the Rienzi Kirton Pedestrian Overpass.

### **Hours of Closure:**

The period of closure will begin on **Friday 15<sup>th</sup> July, 2022 at 5:00PM and end on Monday 18<sup>th</sup> July, 2022 at 4:00AM**

### **Please Note:**

Motorists are kindly asked to take note of the following to allow for the completion of works in a safe and timely manner:

1. Emergency vehicles (TTPS, TTFS, and Ambulances) will be permitted to enter site area via TTPS authority **ONLY**.
2. During truss installation on Lady Hailes Avenue, emergency vehicles will be permitted through the Rienzi Kirton Highway. Similarly, during the truss installation on Rienzi Kirton Highway, emergency vehicles will be permitted through Lady Hailes Avenue.

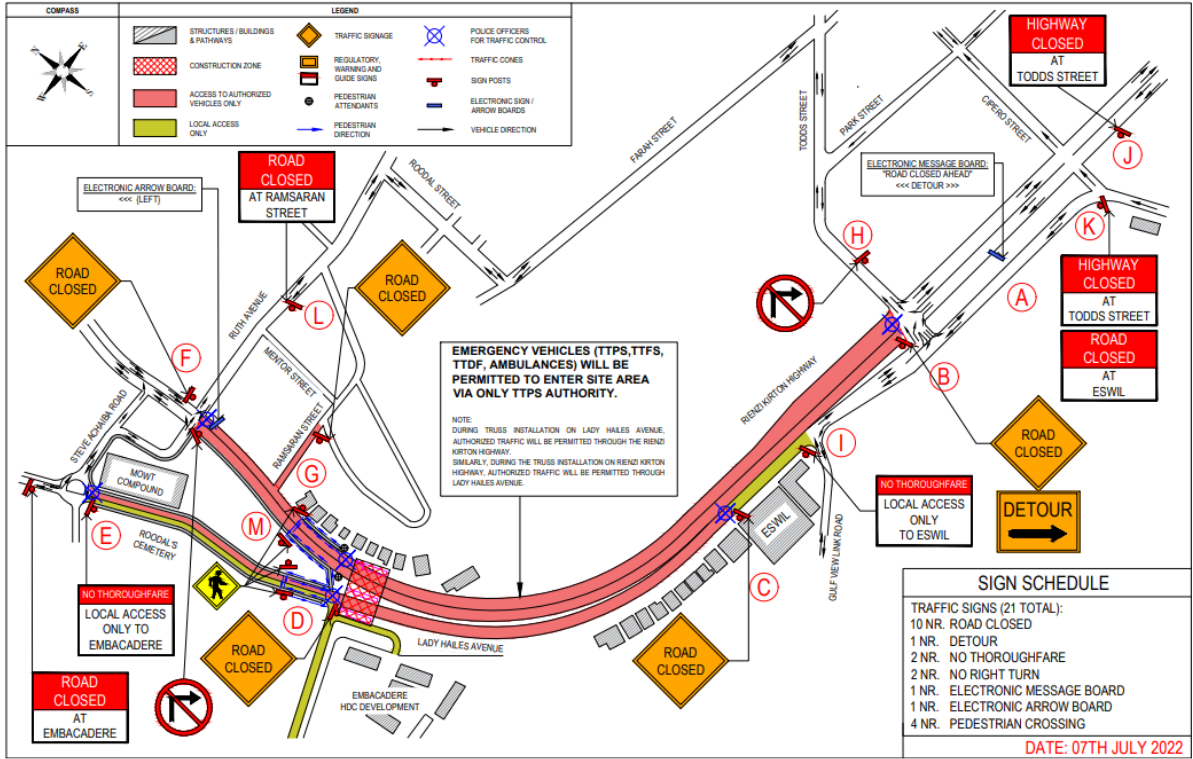
**Temporary Traffic Diversions:**

- Vehicles heading in an Easterly direction on the Rienzi Kirton Highway, wishing to head into San Fernando, will be required to exit North unto either Ciperio Street or Todd Street.
- Vehicles traversing the South Trunk Road heading into San Fernando are advised to continue along the San Fernando Bypass, utilizing either Ciperio Street or Rushworth Street.
- Vehicles wishing to exit San Fernando are advised to utilize routes leading to the San Fernando Bypass.
- All PTSC Buses, Large Trucks and Trailers wishing to exit San Fernando can utilize High Street, unto the San Fernando Bypass Road to their destination.

Considering the above, motorists are advised to comply with the following: -

- Proceed with caution and observe all directional signs and barriers.
- Comply with instructions from Police Officers on site to facilitate a safe and orderly flow of traffic.
- Be aware of heavy equipment entering and exiting the site.
- Drive at a reduced speed on approaching the work zone.

The Ministry of Works and Transport regrets any inconvenience caused and thanks the public for its continued cooperation. For further information, please visit the Ministry of Works and Transport's website at [www.mowt.gov.tt](http://www.mowt.gov.tt) or call the **PURE Unit at 638-2350/675-4052.**



For further information and updates, visit [www.mowt.gov.tt](http://www.mowt.gov.tt) and official social media pages.

