

PUBLIC NOTICE

Churchill Roosevelt Highway / Southern Main Road Flyover and Ancillary Works

PERMANENT CHANGE IN TRAFFIC FLOW

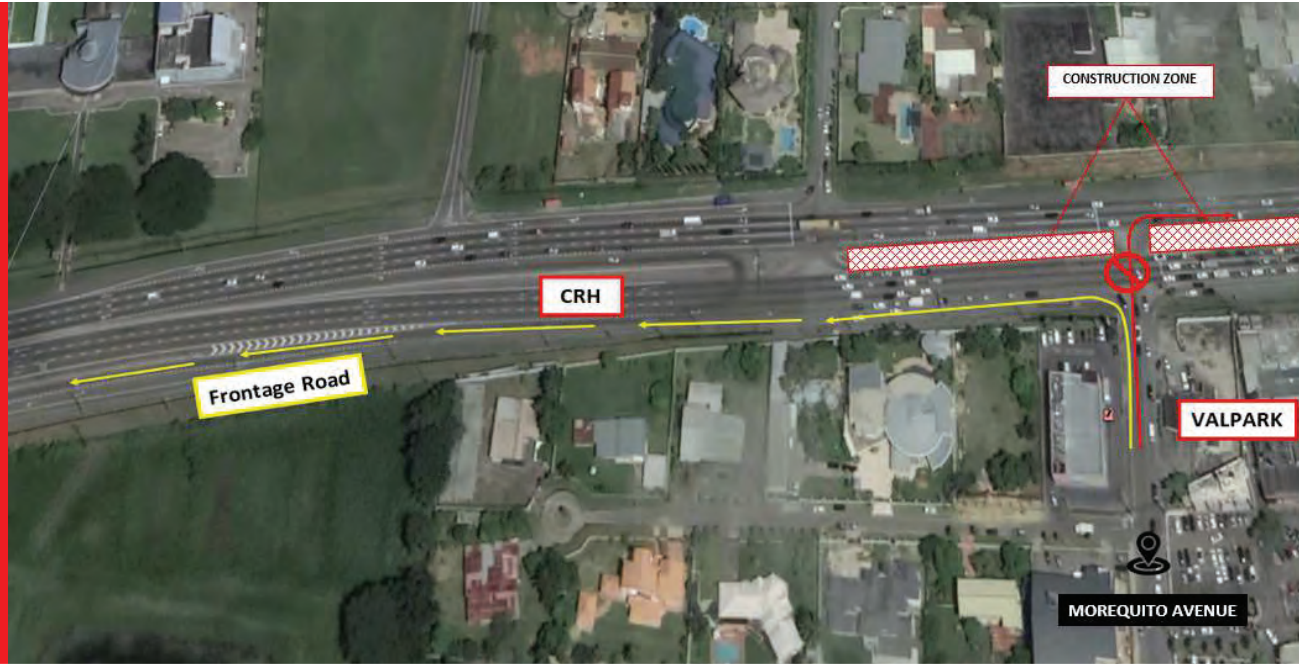
The National Infrastructure Development Company Limited (NIDCO) in partnership with the Ministry of Works and Transport (MOWT) wishes to advise the general public (motorists/residents) that the Curepe Interchange Project is expected to be substantially completed by the end of March 2020. In an effort to achieve this timeline, it has now become necessary to introduce the following changes effective **Sunday 9th February 2020 at 12 noon.**

VALSAYN SOUTH

Change in traffic flow from Morequito Avenue to Churchill Roosevelt Highway, Eastbound.

Motorists/residents travelling north along Morequito Avenue (Valsayn South and environs) who wish to proceed East along the Churchill Roosevelt Highway (CRH) are advised to turn left onto the westbound section of the CRH.

Motorists are advised to keep on this lane, proceed along the frontage road and follow the directional signs to access the eastbound section of the CRH via the CRH/Uriah Butler Highway Interchange.



VALSAYN NORTH

Change in traffic flow from CRH Westbound to Prince Charles Avenue.

Motorists/residents travelling west along the Churchill Roosevelt Highway (CRH) who wish to proceed north onto Prince Charles Avenue (Valsayn North and environs) are advised to keep left on the CRH and exit onto the frontage road.

Follow the directional signs to access the eastbound section of the CRH and final destination via the CRH/Uriah Butler Highway Interchange.



Motorists are advised to comply with following:

- Proceed with caution and drive at a reduced speed on approaching the work zone.
- Observe all directional signage and barriers provided on the approaches to the site.
- Be aware of heavy equipment entering and exiting the site.
- Comply with instructions issued by police officers to facilitate a safe and orderly flow of traffic.

All precautions are being taken by the MOWT, NIDCO and its Contractor to guarantee that proper Health, Safety and Environmental Standards are maintained. We thank you for your cooperation and regret any inconvenience caused.

For further information please contact:

THE CORPORATE COMMUNICATIONS DEPARTMENT
National Infrastructure Development Company Limited - NIDCO
The Atrium - Don Miguel Road Extension, San Juan
PHONE: 638-8236 | E-MAIL: communications@nidco.co.tt



ACCESSING THE CRH/UBH INTERCHANGE